

Seating

Standing

Sleeping

Therapy

JENX[®]
Positioning for life



Supine Stander 3 by Jenx

A robust, yet comfortable and easy-to-use standing system, providing unrivalled support and safety for the user standing in a supine position from infant through to adult, up to 100kg



Always Supportive...

Jenx Limited, Wardsend Road, Sheffield S6 1RQ, United Kingdom
tel: +44 (0) 114 285 3376
email: export@jenx.com
www.jenx.com

JENX[®]
Positioning for life



Supine Stander 3 by Jenx

Standing is important for physical and social skill learning. With this in mind, Supine Stander 3 has been specifically designed to allow joints to be supported, whilst training balance and building core strength. Supine Stander 3 also allows greater social interaction and involvement in a wide range of therapeutic or recreational activities. The frame and its features also provide easy angle adjustments (from horizontal to upright), durable quality, outstanding postural control and the exceptional pelvic stability that is essential for providing supported standing.

Supine Stander 3 has been designed to meet the needs of even the most complex posture. The firm and flexible lateral supports in conjunction with our innovative straps offer the ability to accommodate and correct to a safe, comfortable and aligned posture. Numerous leg control options ensure fixed knee flexion, leg length discrepancy and windsweeping are all accommodated comfortably and safely.



INNOVATIVE
FEATURE

Split Column

Supine Stander 3 provides the opportunity to remove the top 2 polyurethane board sections. This allows a more discreet support surface whilst offering great growth potential and increasing the product life cycle by reconnecting the boards as the user grows.

INNOVATIVE
FEATURE

Head Support

The choice to remove the top two boards allows additional headrest fitting options of the **Multigrip™ Head Support**. This allows more precise head positioning that can be adjusted to cushion, support and control almost any head position.

INNOVATIVE
FEATURE

Polyurethane Boards

Comfortable, easy to clean and impervious to fluids; polyurethane boards and **Support Pads** make the Supine Stander 3 a breeze to clean and keep hygienic.

The boards also offer a solid surface which makes for safe and dignified transfers in and out of the product. No large gaps also prevents the risk of the users limbs getting caught.

INNOVATIVE
FEATURE

Abduction Block

Height adjustable **Abduction Block** with simple options to create varying degrees of abduction quickly and easily to ensure the correct posture for the user.

INNOVATIVE
FEATURE

De-rotational Thoracic and Pelvic Straps with Lateral Support Pads

Straps fasten in the centre and adjust independently from either side, enabling a precise mid-line position to be achieved and maintained. Buckles, along with hook and loop fastener mean that once adjusted correctly, the straps can be fixed, making it difficult for siblings or classmates to tamper with, as well as keeping everything looking neat and tidy!





INNOVATIVE
FEATURE

Knee Support Pads

Available in a range of sizes, complete with de-rotational knee straps; the **Knee Support Pads** help to control external rotation along with providing effective extension of the knee to facilitate the correct posture in a neutral standing position. **Flexion Control Pads** facilitate weight bearing through developing joints and can also be added for users who cannot achieve a full range of extension or who have fixed knee flexion.

INNOVATIVE
FEATURE

Multi-use Tray

Contrasting tray edging gives a definitive visual boundary, whilst allowing toys and other items to be secured. The optional **Tray with Bowl and Reduced Cutout Infill** allows for a range of messy play activities and suction toys to be attached. The functional tray also offers anterior support for a user to maintain an upright position.

INNOVATIVE
FEATURE

Split Footplate

The split footplate enables one foot to be positioned higher than the other to accommodate leg length discrepancy without the need for sandal raising blocks. It also provides easy adjustments of dorsi/plantar flexion for those who can not maintain plantigrade, which can be simply adapted for each individual user.

Always Encouraging

Standing is a great way to improve the user's outlook on the world and their physical development.

Improves blood pressure & circulation



Helps digestion, bowel & bladder emptying



Encourages bone & muscle development



Gives a new perspective and ways to participate



Aids respiration & speech



Helps relieve pressure created during sitting



Supports pelvis, thighs & feet so children can join in everyday activities



Provides opportunities to increase social skills



Users gain huge psychological advantages from standing, as well as those important physical and development benefits.

INNOVATIVE FEATURE

Smooth & Simple Adjustment

Each user will have a slightly different posture in standing and will require different support. The angle of the support surface can be electronically adjusted from horizontal through to upright, and because the adjustment is infinite, each Supine Stander 3 can be set to exactly the right angle for all users, which can be observed by the angle gauge. This allows progress to be monitored and the angle of the board altered in line with changes in ability.



INNOVATIVE FEATURE



Battery Functions

When the battery level reaches 20% and an attempt is made to adjust the standing angle with the hand control, the user/carer will hear an audible warning. The angle of the stander will either remain or return to a horizontal position until the battery is connected to a power supply; this safety feature ensures the user will not remain positioned in an upright position. The handset also includes a '4 LED' battery level indicator to illustrate the battery charge level.

Always Configurable Accessories

The modularity of **Supine Stander 3** by Jenx allows you to choose specific accessories to meet the exact requirements of each individual user.

Supine Stander Frame

Basic Supine Stander unit includes:

- Grey base with 4 lockable swivel castors
- Polyurethane boards with two removable sections
- Split footplate
- Boards available in 5 colours: blue, pink, green, red and grey.



Moulded Head Support

Simple but effective headrest for those who require minimal head support. Comes mounted on a flexible fixing bracket.



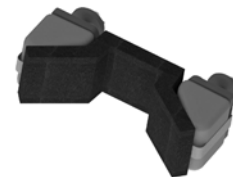
Multigrip™ Head Support

The original and innovative Jenx **Multigrip™ Head Support** is available in 3 sizes for all Jenx seating and standing systems. All Jenx **Multigrip™ Head Supports** have a choice of various highly flexible fixing brackets, all of which give adjustment for height, depth and angle.



Head Pad Cushion with Side Supports

Provides simple head support with extra comfort and stability for the user. Consists of 2 small polyurethane side **Support Pads** in a choice of colours and a black fabric padded head cushion.



Support Pads

Made from flexible and hygienic polyurethane, these **Support Pads** are easy to attach and adjust to provide hip and thoracic support. The **Support Pads** come complete with the appropriate size de-rotational strap as standard; enabling a mid-line position to be achieved and maintained.



Flexible Thoracic Support Pads

These slimline and super flexible **Support Pads** (with straps) are designed to provide outstanding positioning with comfort in mind. All sizes are independently adjustable for height and width to ensure maximum trunk control.



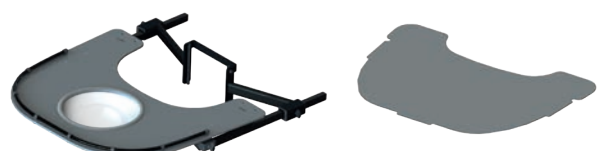
Tray

Removable **Tray** with contrasting tray edging gives a definitive boundary, particularly useful for users with visual impairments.



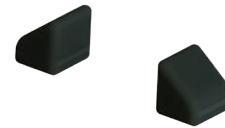
Tray with Bowl and Reduced Cutout Infill

This **Tray** option comes complete with a removable bowl and a **Reduced Cutout Tray Infill**, which provides the perfect surface for use with suction toys, anchors or grab bars, and prevents even the slimmest of arms from falling into gaps.



Elbow Blocks

Used to encourage arms into a midline position and/or to block excessive retraction.



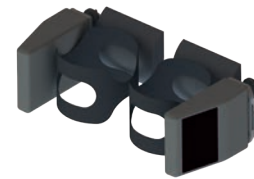
Knee Support Pads

Available in a range of sizes, complete with de-rotational knee straps; the **Knee Support Pads** facilitate weight bearing through developing joints and remove the possibility of any internal or external knee rotation along with providing effective extension of the knee to facilitate a neutral standing position.



Flexion Knee Support Pads

Includes **Arched Foam Pads** to comfortably accommodate fixed knee flexion in standing. The **Flexion Knee Support Pads** include a unique de-rotational knee strap which removes any internal or external knee rotation and provides effective support for the knee to facilitate a safe standing position.



Arched Foam Pads

Used with **Flexion Knee Support Pads** or the **Abduction Block** for extra padding where required.



PU Spacer Blocks

For additional abduction or spacing on the **Flexion Knee Support Pads**. Fully moulded from hygienic polyurethane; simply use hook and loop fastener to attach into place. Can also assist in accommodating asymmetrical knee flexion.



Abduction Block

Unique, height adjustable **Abduction Block** with simple options to create varying degrees of abduction quickly and easily.



Sandals

Available in 3 sizes, these ensure solid foot placement to give the foundation for effective leg positioning and safe standing. Jenx **Sandals** are interchangeable across the entire range of Jenx seating and standing products.



Ankle Snugs

An optional foot positioning accessory to the standard **Sandals**. The **Ankle Snug** offers a unique magnetic buckle fastening mechanism, which can be operated single handed.



Quick and Easy Set-ups

INNOVATIVE FEATURE

The **Support Pads** for Supine Stander 3 can be repositioned tool free. Cleverly designed wing knobs offer a comfortable grip to enable effective clamping with minimal effort - meaning that adjustments have never been easier.

Numbered boards on the back also allow set-ups to be easily recorded and recreated - ideal in a multi-user environment.



INNOVATIVE FEATURE

Peer Height Interaction

The footplate's are positioned close to floor level, allowing for inclusivity within the classroom and an opportunity to increase social skills.

INNOVATIVE FEATURE

Control Box

As an additional safety measure, the Control Box can operate the angle adjustment by being connected to the mains power supply as a fail-safe if the battery has been depleted.

Supine Stander 3 by Jenx Technical Specifications

	Measurement	Units	Supine Stander 3
Age Range	approx.	yrs	6yrs - adult
User Weight	max	kg	100
User Height	max	mm	1900
Chest Width	min - max	mm	220 - 440
Hip Width	min - max	mm	220 - 440
Knee Pad Width	min - max	mm	220 - 440
Tilt-In-Space	supine	degrees	10° - 90° (+/-5°)
Footplate Angle	dorsi - plantar	degrees	20° - 20°
Footplate to top of Support Boards	min - max	mm	1070 - 1630
Footprint	width x length	mm	750 x 1070

Find Your Distributor

To locate one of our carefully selected distributors near you, visit:
[jenx.com/where-to-buy](https://www.jenx.com/where-to-buy)



@JenxLtd



@JenxLtd



@JenxLtd

